




Legacy Application Assessment

HCLTech

App Modernization Customer Stories

| Power Platform | Company | Summary |
|--|---|--|
| <ul style="list-style-type: none"> Legacy LOB applications > Dynamics 365/ Power Platform Lotus Notes /Domino > Dynamics 365 / Power Platform InfoPath > Power Platform HyperAutomatoin RPA Migration Data/Analytics Consolidation, eg: Tableau > Power BI |  | <ul style="list-style-type: none"> HCLTech was selected to build Power App for key business case Impactful Use Case: Incident management Power App for the live events taking place in Disney theme parks |
| |  | <ul style="list-style-type: none"> H&M's StoreLens wanted to redefine their consignment program's reseller experience HCLTech developed a Power Apps portal and canvas app solution to manage the entire resale business process, from data entry of personal information, clothing items, picking an appointment time, etc. The Power Platform Solution is multilanguage, multicurrency and multi-country. |
| |  | <ul style="list-style-type: none"> Power Platform COE for HQ and 9 global zones to enable citizen development North America – 28 legacy app migration and modernization with Power Platform Europe – 12 Complex apps migration and modernization with Power Platform |





Driving innovation to accommodate business realities – Legacy app modernisation

Customer Overview

- Anheuser-Busch InBev is a multinational drink and brewing holdings company based in Leuven, Belgium. With more than 170,000 employees, the company produces, markets, distributes and sells a portfolio of ~630 beer brands in 150+ countries and has brewing operations in both developed and developing markets. It is the world's largest brewer and is considered one of the largest fast-moving consumer goods (FMCG) companies in the world.

Business Challenges

- Like most enterprise organizations, ABI has thousands of custom applications built on a variety of technology platforms. While they partnered with HCLTech to implement Power Platform globally a few years ago, they still relied on hundreds of existing apps that predated Power Platform adoption. To that end, they identified 27 mission critical apps that were high priority for rebuilding in Power Platform.

– Engagement Overview

HCLTech Solution



Delivery Approach

- HCLTech worked closely with ABI to conduct a legacy app assessment for an initial 100 applications and to provide a roadmap to modernize the application workload.
- For the majority of the applications, Power Platform was a suitable new home, but in a few instances, HCLTech made a recommendation to either retain the application and surround it with Power Platform to alleviate business pains or move the application to a suitable alternative technology platform.



Solution Summary (Functional Architecture)

- **Questionnaire and Analysis:** The initial phase of the application assessment exercise was a discovery that took the form of issuing our Power Platform Application Assessment app to Business and Technical SMEs, gaining access to application source code and installing tooling to interrogate the apps. Once this information was gathered, the HCLTech team played back their understanding of each app with the ABI SMEs.
- **Preparation and Presentation:** HCLTech then produced an Assessment Report for each app that included a Functional and Technical assessment, a suggested architecture, estimated cost and timeline to deliver and expected resources from ABI to work with HCLTech to move the app to Power Platform.
- **Migration, Rebuild with transformation:** The 27 apps were then migrated over the course of 10 months with squads consisting of Solution Architects, Power Platform Consultants, Developers, Testers and UI Consultants working in parallel on apps with different complexity at any one time.

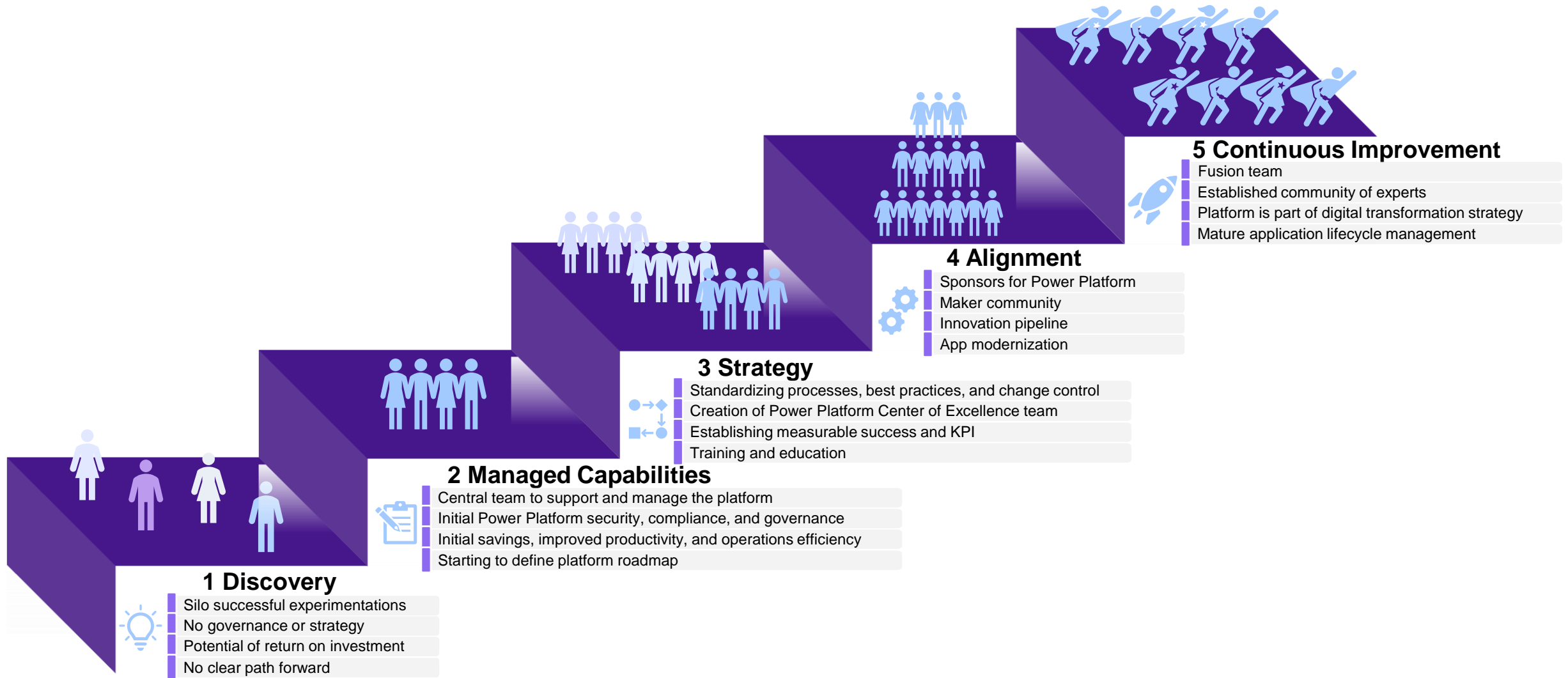
Solution Stack

- Power Platform Center of Excellence
- Power Apps
- Power Automate
- Power Virtual Agents
- Power BI

Business Impact (ROI)

- Total user base of 10,000 across 27 application in the USA
- Reduced on-premise infrastructure costs by \$ 500K a year
- Reduced staff overheads and data maintenance costs by \$750K year
- Simplified, inexpensive and faster ongoing enhancements and releases with the cloud-based solution
- All migrated applications now conform to AB InBev's stringent Information Security requirements

Power Platform Adoption Maturity Model



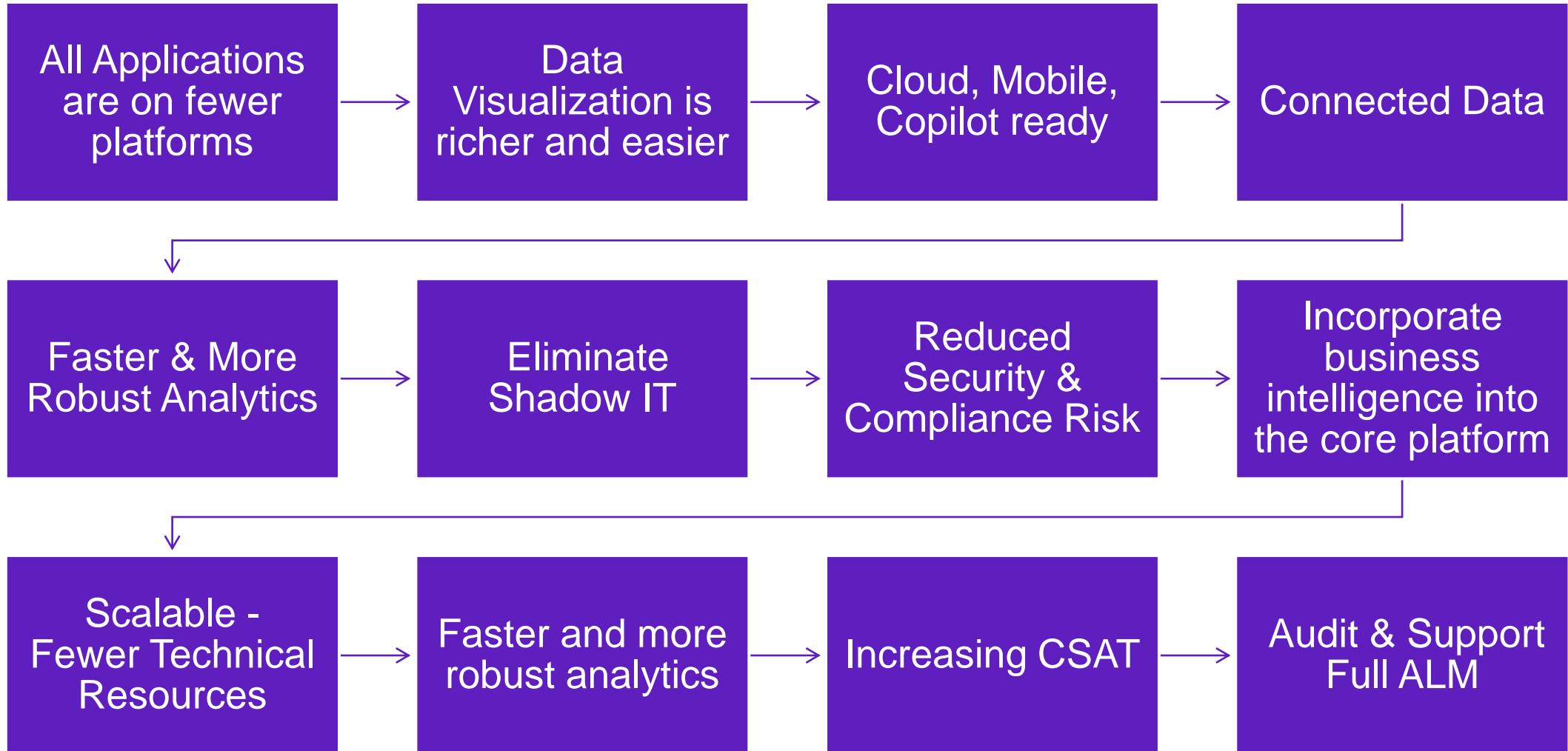
Current State

Higher TCO + Difficult Data Management + Disconnected Data

| | | | |
|--|--|-----------------------------|---|
| Disconnected landscape of Applications | Applications are Incompatible with modern technologies | Not Cloud, Mobile, AI ready | High maint cost Limited Performance Monitoring |
| Disparate/Disconnected data | best of breed 5 years ago | Security & Compliance Risks | Limited or cumbersome data analytics |
| Shadow IT | No Documentation | No/Poor CSAT | No Support Strategy (ALM) |

Copilo

Lower TCO + Modern Data Management + Richer Analytics + Leaner Teams



Where to Start



Lotus Notes



nintex



tableau



.NET



SharePoint



Where to Start

2 reasons

- Any group running 30+ Application
- Carrying High Technical Debt
- Knowledge is controlled by few people



Well Services



Back Office



Subsea



Marketing



Remote Services



Fleet & Transportation



West Region

Assessment Approach

1

Application Classification

- Technology grouping
- Process grouping
- Functional grouping

2

Criticality Assessment

- Usage Analysis from Tool
- Process priority
- IT team ranking
- Business team ranking

3

Complexity Assessment

- Tool data
- Workshop outcome
- Design analysis (Manual)
- Expert assessment

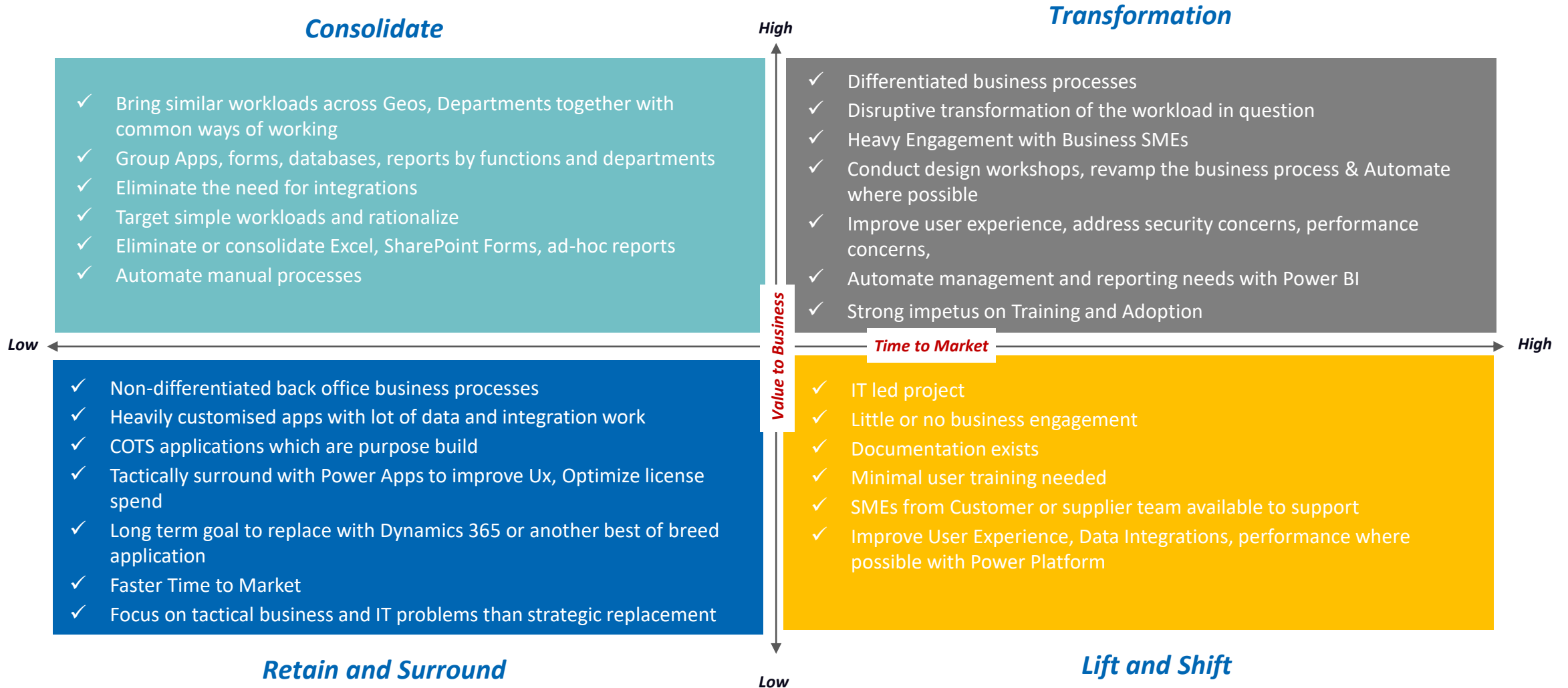
4

Assessment Report

- Classification by
 - To Decom
 - To Archive
 - To re-platform
- Roadmap for re-platform

- **Application classification** will be based on
 - Application Title, Content type from Tool report
 - Discussion with Application owners
 - Responses to the questionnaires
- **Business criticality assessment** is done based on the tool data, questionnaire responses and inputs from workshop
- **Technical Complexity assessment** will be based on tool complexity ranking, high level design analysis, integration with other systems

Prioritization using HCL's Framework



Power Platform Patterns of Value

Microsoft Power Platform

 AI Enabled 



Copilots



Automations



Apps



Pages



BI



Power Fx



Managed
Environments



Dataverse



1000+
Connectors



AI Builder

aka.ms/PowerPlatform

Power Platform Patterns of Value

How Business uses Power Platform



App Modernization

Update, rearchitect, and rebuild apps at scale and address backlog.

Caterpillar

Rental equipment turn around processing app reduced entire process to **1-day**



Business Agility

Improve processes and experiences for core systems: SAP, Oracle, Salesforce.

Ernst and Young

General ledger posting process connected to SAP yields **30%** Cost reduction from



Accelerate Pro Development

Reduce time and effort in creating enterprise-grade apps.

Blackmores Group

Pro-code plus No-code practice reduced time to produce key supplier reports by **50%**

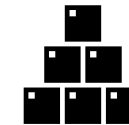


Enhance Employee Experience

Interact with business data with ease in Microsoft 365 and Teams.

American Airlines

Frontline connected through Teams and Power Apps save **10 hours** of taxi time per day

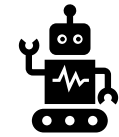


Empower Departments

Enable departments to solve business challenges with IT governance.

T-Mobile

Employee led initiatives facilitated by Marketing team saves **\$4M+** from employee initiatives



Optimize Hyperautomation

End-to-end automation with RPA, DPA, AI, chatbots, more.

Pacific Gas & Electric

Digital productivity program saved **75,000 hours** across organization

Power Platform Patterns of Value

Why IT chooses Power Platform



Agility

Create rich apps, automations, and bots fast with AI Copilot and low-code tools.



Governance

View, control, and manage policies, usage, onboarding, ALM via Managed Environments.



Security

Built-in Identity and user management, DLP, encryption, compliance, and privacy.



Responsible AI

AI that is fair, reliable, safe, private, secure, transparent, accountable, and inclusive.



Pro Dev Friendly

APIs, Connectors, Custom Connectors, PCF controls, Azure DevOps, and Visual Studio support.



Accessibility

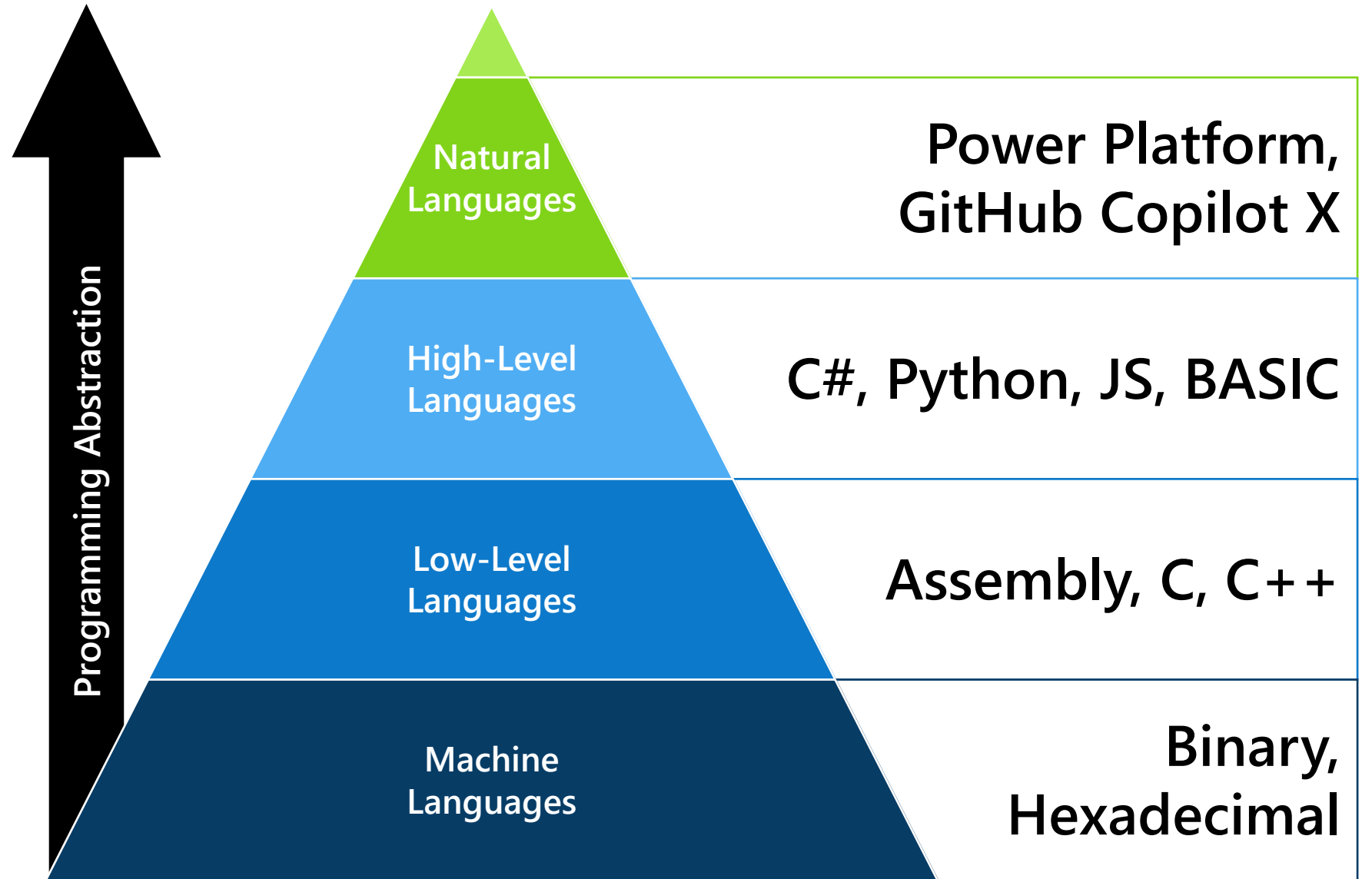
Build accessible and compliant apps easily for Windows, Web, iOS, and Android.

With Power Platform, organizations can reimagine business, IT, and developer **culture** and elevate all employees.

[Power Platform Gartner 2023](#)

Power Platform AI Overview

With Copilot in
Power Platform,
English is now a
Programming
Language



What AI does for Power Platform

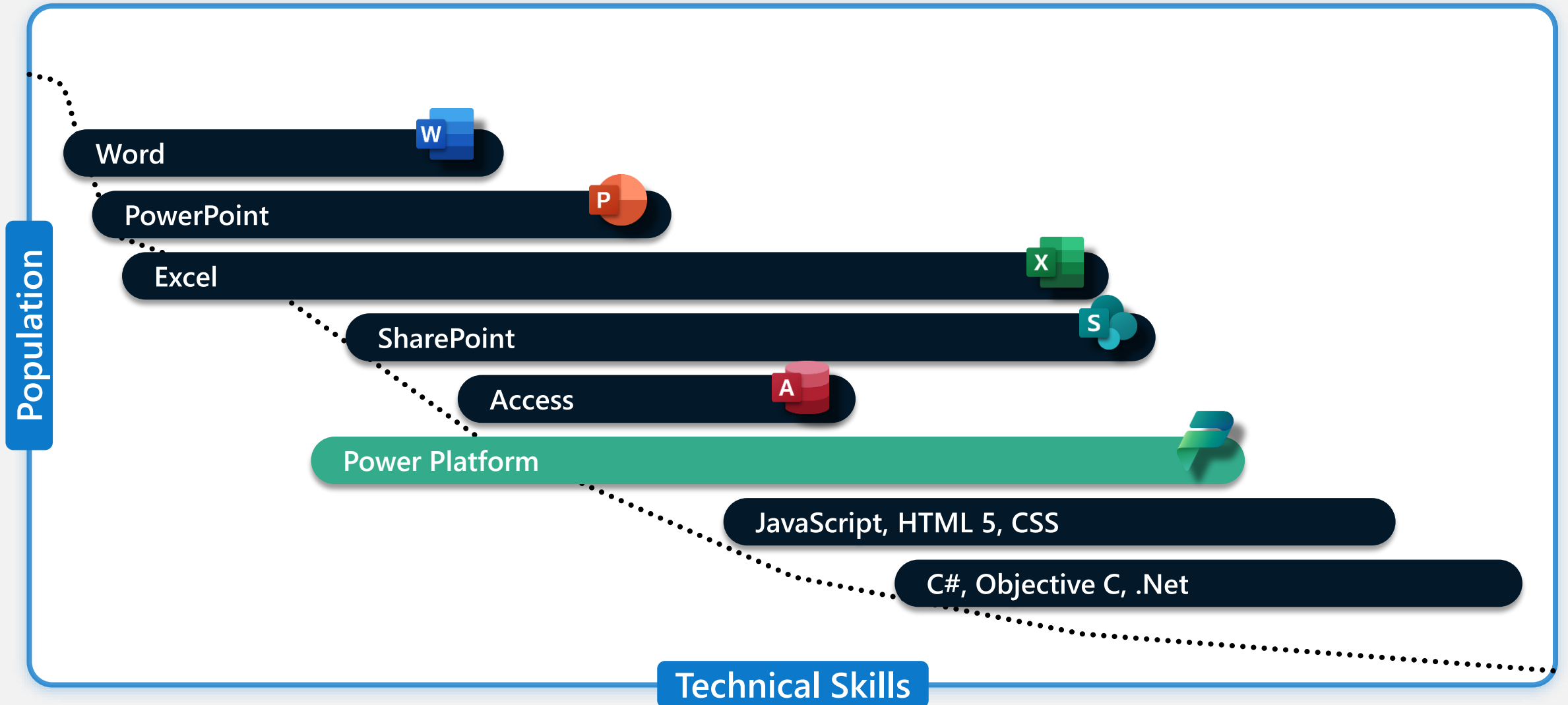


**Easier to make apps,
automations, copilots, and sites**

**Richer to use apps,
automations, copilots, and sites**



Low Code Adoption



Low Code Adoption + AI Copilot

